

Heritage





Gladesville Hospital - façade conservation works

Heritage

Local and state government agencies, as custodians of some of the most iconic public heritage buildings and places in NSW, have an important obligation to effectively use and maintain their built heritage assets now and into the future.

As the stewards of our heritage, the responsibility of each agency extends to leading by example through the adoption of best practice heritage management strategies, processes, and practices, to ensure all public heritage assets are recognised, respected, and promoted.

The NSW Public Works Heritage team provides expert advice on the care, repair, management, and compliance requirements for heritage buildings, and their settings, sites, and collections. We deliver best practice conservation outcomes and guide potential development of public heritage assets. In support of this we also manage:

- The pre-qualification of private sector built heritage consultants (Scheme 3831) for whole of government procurement.
- The Minister's Stonework Program - supporting agencies with expeditious, co-funded solutions for condition related risk on their heritage sandstone assets.
- Plan Services - the digital archive of public works files available for purchase.

David Mason

Senior Heritage Specialist

02 4247 4915

David.Mason@pwa.nsw.gov.au

Heritage projects

Martine Craswell

Senior Heritage Advisor

02 9769 9839

Martine.Craswell@pwa.nsw.gov.au

Minister's Stonework Program projects

Masud Parvez

Procurement Manager

02 9769 9850

Masud.Parvez@pwa.nsw.gov.au

Plan Services

Kate Napier

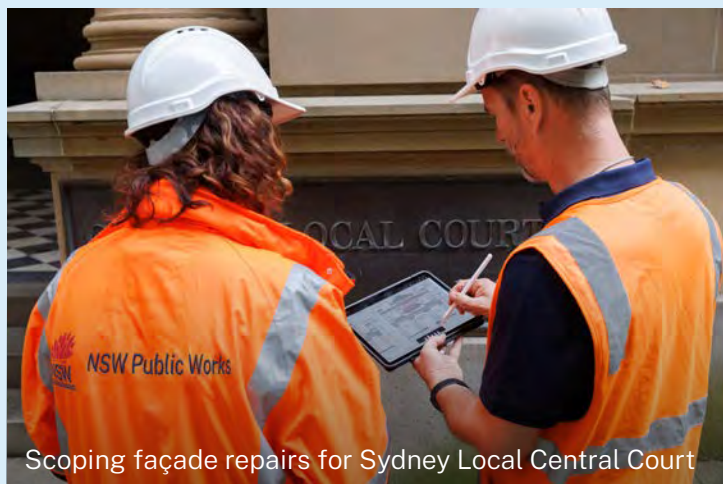
Director Heritage Environment and Planning

02 9769 9847

Kate.Napier@pwa.nsw.gov.au

Our expertise

We provide **advice** on the **management** of public **heritage assets** across NSW, including **natural** and **cultural landscapes** and the **conservation** of our **public sandstone buildings**.



Scoping façade repairs for Sydney Local Central Court

- Heritage asset advice
- Asset condition assessment
- Design and direction of conservation work
- Asset and portfolio strategies
- Minister's Stonework Program
- Heritage significance and impact assessment
- Aboriginal archaeology
- Conservation management plans
- Planning advice and approvals
- NSW Government historic plans

Blayney Fire Station

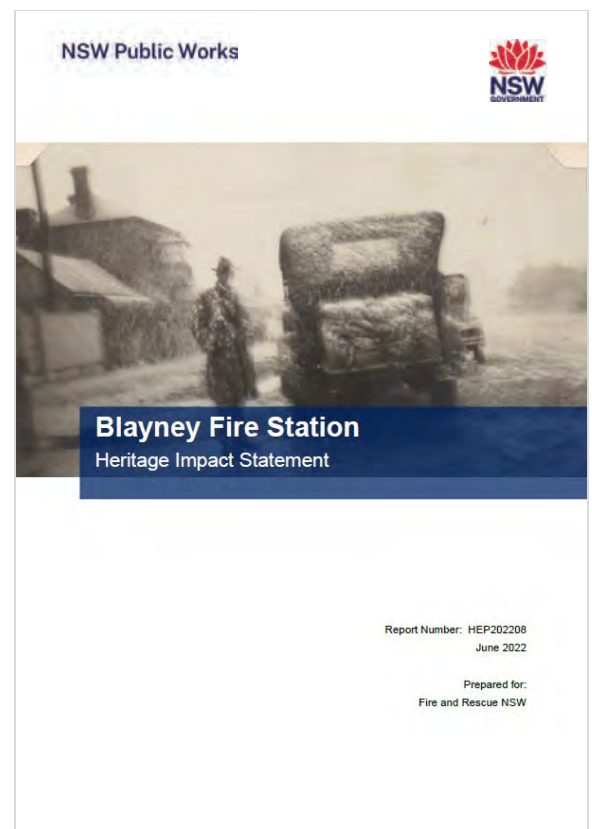
Client: NSW Fire & Rescue

Location: Blayney, Riverina Western Region

Services provided: Advice and heritage impact statement.

The 1928 Blayney Fire Station has a handsome brick and painted rendered facade with timber detailing and simple but intact interiors including pressed metal ceilings, decorative plasterwork, skirtings, picture rails and fireplace mantles. It is locally listed as a heritage item within a conservation area, and is on the Section 170 Register.

Proposed works were part of the *Clean Fire Station Diversity and Inclusion Program* including upgrades to lockers, bathrooms and change rooms, as well as minor external alterations. Change was predominantly accommodated in areas of non-significance, or low sensitivity, with negligible impact on the significance of the item.



National Art School Minister's Stonework Program

Client: Create NSW

Location: Forbes Street, Darlinghurst, Sydney

Services provided: Technical leadership, project and contract management, co-funding, architectural and structural documentation, and heritage trades quality control.

The Forbes Street façade of the National Art School is of exceptional heritage significance as part of Darlinghurst courthouse and gaol complex. It is standing as an imposing representation of the power of the colonial justice system.

Following a 2018 condition audit, stones were identified as being in poor condition, due to salt attack, wind erosion and general deterioration. Rot was found in the timber windows and the metal security grills were corroded causing cracking to the surrounding stones.

Conservation works included the indent replacement of the coat of arms unicorn head, date figures, lion's nose, and spear tips.





National Art School – whole façade conservation

Walka Water Works

Client: Maitland City Council

Location: Oakhampton, Hunter Valley Region

Services provided: Condition survey, engineering safety and options analysis, historical archaeology assessment.

The Heritage team has advised the local council at various stages on management of this remarkable complex, one of the largest and most intact pieces of 19th century industrial infrastructure in the Hunter Valley.

The pump house, chimney and boiler house are polychrome brick structures in a traditional configuration which are located within an attractive landscape. The entire complex, including reservoir and tanks, is an important cultural landmark.

The site is listed on the NSW State Heritage Register for its historical, aesthetic and social values as one of the most important advances in public health in the history of the Hunter Valley.



Condition Audit Program Minister's Stonework Program

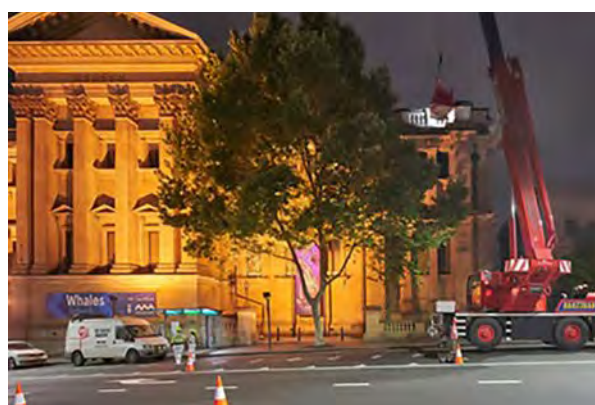
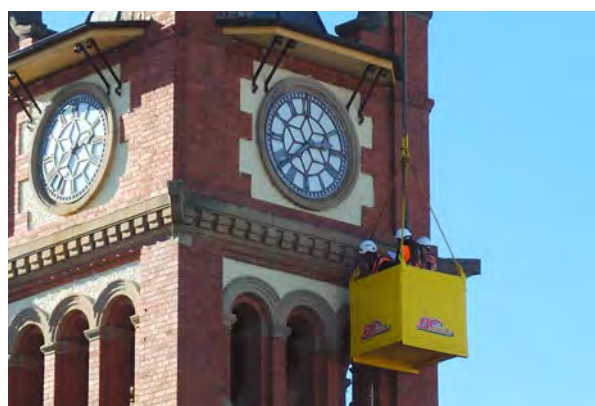
Client: State Government Agencies

Location: NSW State-wide

Services provided: Close, high-level inspection of exterior building elements by a multi-disciplinary team to scope repair works and identify immediate public safety risks.

The annual Condition Audit Program is carried out by an experienced multidisciplinary team which consists of heritage architects, stonemasons, and structural engineers, to assess the condition of facades and remove the immediate risk of falling stone.

A report outlines the current condition of the building, outstanding maintenance, safety and structural risks, a cost estimate, and the location of any defective or loose building fabric removed during the audit. Reports include architectural and structural drawings and specifications, of required repairs.



Glebe Island Bridge

Client: Transport for NSW

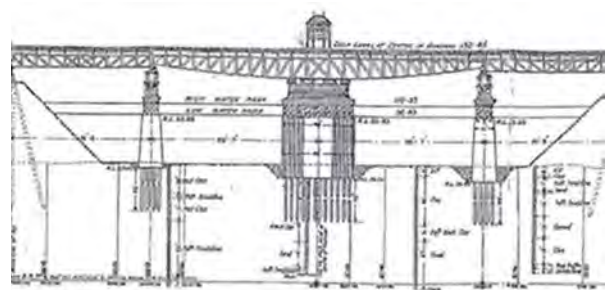
Location: Pyrmont, Sydney

Services provided: Conservation management plan, options analysis.

The Heritage team was engaged to update the Conservation Management Plan for the site, originally prepared by the Department of Public Works & Services in 2000.

The engagement included extensive research and updated policies, specialist input on maritime archaeology, as well as advice for the restoration and re-use of the bridge for better public space and connectivity to the Sydney Harbour “Bays West” precinct.

The site is listed on the NSW State Heritage Register for its historical, aesthetic, scientific and social values.



The elevation of the Glebe Island Bridge showing pivot, rest and buttment piers, as well as the delightfully curved central swing span.



Asset Strategies Minister's Stonework Program

Client: State and Local Government Agencies

Location: All of NSW

Services provided: CAD documentation of whole building envelope, high level condition assessment, diagnosis and prescription of a scope of work, specification and costing.

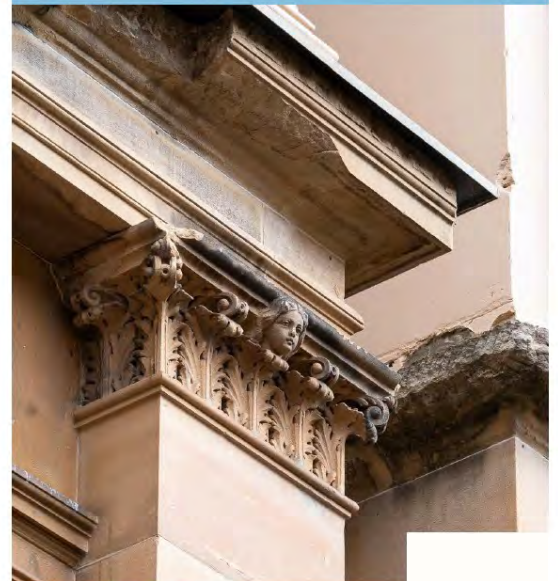
Asset strategies are designed to support the asset manager in decision making and actioning works

- Contains a prioritised and costed works schedule across a building, site or portfolio
- Enables budget requests and forward cost planning allocations
- Brings buildings up to minimum standards of maintenance and repair under the NSW Heritage Act 1977
- Facilitates and demonstrates responsible asset management through risk identification and schedules of actions.

Sydney Hospital Sandstone Maintenance Strategy

Heritage Asset Advisory, Public Works Advisory,
Department of Regional NSW

April 2020 | Report No. HAA202012



Market City

Client: Jen Retail Properties t/a Market City Shopping Centre

Location: Haymarket, Sydney

Services provided: Condition assessment, heritage advisory and scope development, engineering safety, project budget formulation and project and contract management

Over the last three years, NSW Public Works has been working with Market City to carry out heritage advisory services for the conservation and repair documentation of the 1909-10 facade of the Market City building. Stone falling off the building to the footpath below had raised safety concerns for the land owner and tenant.

The facade is of heritage significance and is listed on Place Management's Heritage Register.



Ultimo TAFE Minister's Stonework Program

Client: TAFE NSW

Location: Harris Street, Ultimo, NSW

Services provided: Technical leadership, project and contract management, co-funding, architectural and structural documentation, and quality control.

The former Technological Museum (Building C) is the first purpose-built technological museum in Australia and one of the first in the world. The purpose of the works is to prolong the life of significant building fabric and ensure the building's long term conservation, by repairing and/or replacing defective fabric that has reached the end of its functional life. Works included:

- replacement of deteriorated sandstone that has reached the end of its functional life or is structurally unsound
- synthetic stone repair
- timber windows and door repair
- repointing
- external façade cleaning
- desalination and birdproofing.





Ultimo TAFE - whole façade conservation

Why choose NSW Public Works?



Accredited for planning and delivery of capital works

NSWPW is accredited under the NSW Government Agency Accreditation Scheme for Construction to manage the planning and delivery phases of construction and capital works procurement. NSW State and Local Government entities can directly engage the services of NSWPW under the provision of NSW Government Procurement Board Direction PBD 2020-04 and Section 55 of the Local Government Act 1993, providing efficiencies and cost savings.



Strong focus on quality, environmental and safety management

NSWPW operates under triple certification for quality, occupational health and safety (WHS) and environmental (QSE) management systems. These systems and processes provide the foundation for delivering quality projects and a continuous improvement culture, that embraces QSE leadership at all levels and integrates QSE into all activities. NSWPW Project Management Framework is the backbone of our quality system and is used to manage our projects and ensure we deliver to agreed requirements.



State-wide resources

Regional clients benefit from our state-wide network of offices enabling them to source expert project management personnel familiar with the conditions and construction industry issues in their area. This proximity reduces servicing costs, facilitates improved stakeholder communications and enables us to respond quickly to your needs, providing a single point of contact for all services.



Government relationships and knowledge

Successful delivery of complex infrastructure projects relies on effective interaction with stakeholders and regulatory government agencies. NSWPW unique position within NSW Government enables us to bridge the gap between our clients and Government stakeholders to ensure necessary consultations and approvals are undertaken efficiently and effectively.



Managed risks

We place considerable emphasis on advising clients of their risks on projects, including the options and costs to manage these risks. Wherever possible, risks are identified early and inform our planning and procurement strategy development processes. Risks are continuously monitored and updated as projects progress and discussed and managed with clients and contractors.

Working across NSW

HUNTER NEW ENGLAND

Newcastle
117 Bull Street
Newcastle West NSW 2302

Tamworth
155-157 Marius Street
Tamworth NSW 2340

Armidale
85 Faulkner St
Armidale NSW 2350

Inverell
7023 Gwydir Highway
Inverell NSW 2360

NORTH COAST REGION

Lismore
120 Dally Street
Lismore NSW 2480

Coffs Harbour
359 Harbour Drive
Coffs Harbour NSW 2450

Port Macquarie
Level 2, 41-47 Horton Street
Port Macquarie NSW 2444

SYDNEY METRO

Parramatta
4 Parramatta Square
12 Darcy Street
Parramatta NSW 2150

The Rocks
66 Harington Street
Sydney NSW 2000

SOUTH COAST REGION

Wollongong
Level 3, Block E
84 Crown Street
Wollongong NSW 2500

Goulburn
Suite 5, 167 Auburn Street
Goulburn NSW 2580

Moruya
66 Campbell Street
Moruya NSW 2537

Queanbeyan
Ground Floor East
11 Farrer Place
Queanbeyan 2620

RIVERINA/WESTERN REGION

Bathurst
Level 1, 346 Panorama Avenue
Bathurst NSW 2795

Dubbo
34 White Street
Dubbo NSW 2830

Broken Hill
Level 1, 32 Sulphide Street
Broken Hill NSW 2880

Griffith
104 - 110 Banna Avenue
Griffith NSW 2680

Wagga Wagga
2-6 Coleman Street
Wagga Wagga NSW 2650

Dareton
1998 Silver City Highway
Dareton NSW 2717



T 1300 00 88 88

E publicworks@pwa.nsw.gov.au