

Our Capability



Our vision

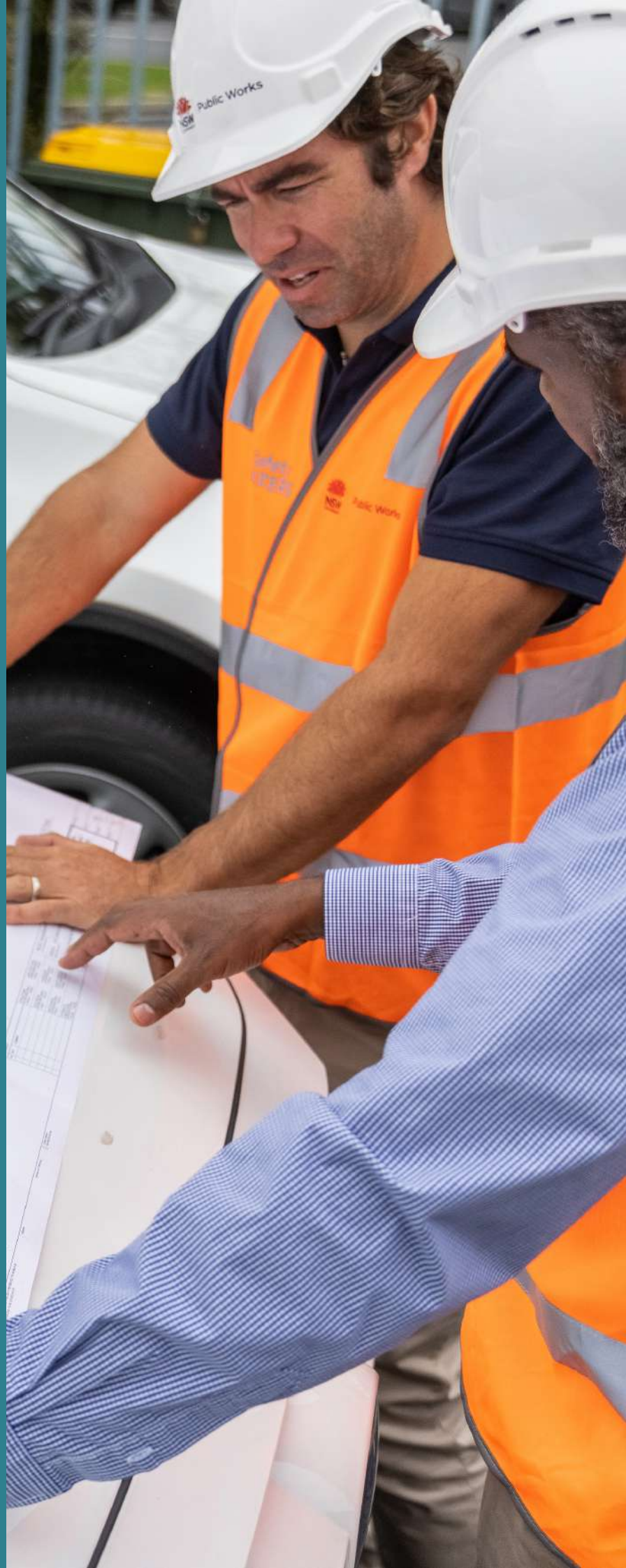
NSW's central agency, impartial regional infrastructure advisory group and whole-of-government construction procurement system custodian.

Our mission

We are the advisory and delivery experts behind NSW's most challenging regional development projects. We bring deep design, engineering, procurement and project management know-how to complex community problems and projects, wherever in NSW our help is needed.

Our values

- Think differently
- Partner and collaborate
- Be invested
- Leave a legacy



Planning and building a NSW that works, together

Who we are

NSW Public Works is the delivery powerhouse behind some of NSW's most crucial projects. There's nothing abstract about what we do. Just look around. Our work is in the hospitals, dams, water treatment plants and high schools – the real foundations of prosperous communities.

In NSW Public Works offices all over the state, you'll find local expertise for local issues. We uncover the best talent, scrutinise cost and risk, and bridge the gap between private sector and government. Bringing passion and focus to everything we do, the projects we work on don't just get done, they become benchmarks others aspire to.

These services are built on a solid foundation of more than 160 years of effective delivery and management of critical infrastructure projects for the State of NSW.



We continue to support the delivery of projects across regional and rural NSW. With more than 500 dedicated staff across our network of 20 regional offices, we are able to quickly and efficiently take on new projects or programs, tailoring the approach to achieve optimal outcomes for the client.

With that said, I hope you find the services summary helpful and don't hesitate to reach out to my Directors or me with any questions.

Drew Varnum

Executive Director, NSW Public Works
drew.varnum@pwa.nsw.gov.au

A handwritten signature in black ink.

With more than 500 dedicated staff across our network of 20 regional offices, we are able to quickly and efficiently take on new projects or programs, tailoring the approach to achieve optimal outcomes for the client.

Building on the past

We are proud of the rich heritage of NSW Public Works. Its contribution to the development of the State of New South Wales is something to be celebrated and built upon.

The original Department of Lands and Public Works was set up in 1856 with 243 staff. Three years later, NSW Public Works formed its own department.

The State's roads, railways, tramways, telegraphs, electricity supply, lighthouses, fortifications, metropolitan water and sewerage, irrigation, local government infrastructure, port and dock yards were all at some time under our care.

Shaping NSW
**SINCE
1856**



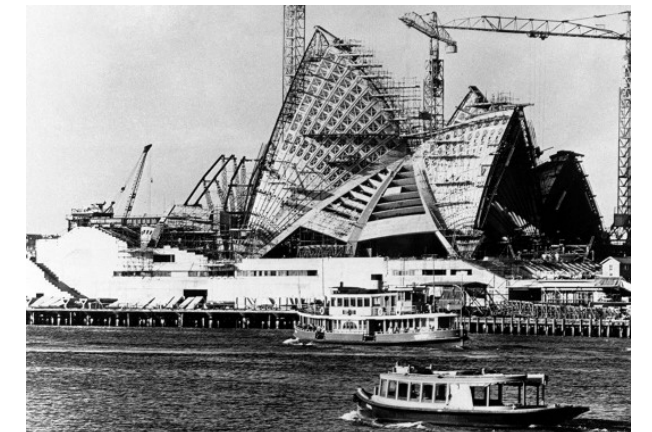
Sydney Harbour Bridge

Designed and constructed under the supervision of NSW Public Works Department Chief Engineer John Bradfield, Sydney Harbour Bridge continues to stand in the spectacular Harbour setting as an icon of Sydney and serving as the key transport link between the two shores.



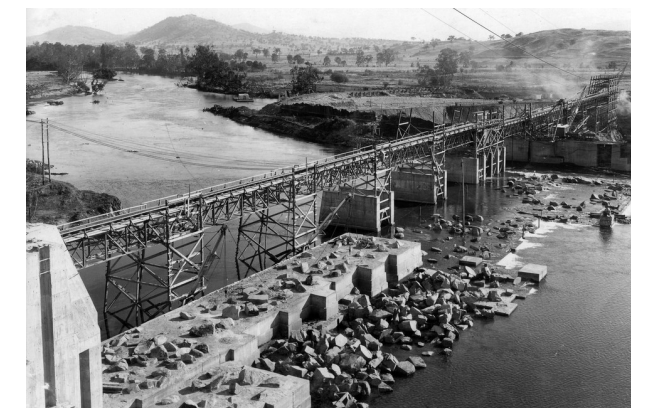
Sydney Opera House

Following the resignation of original architect Utzon, a firm of Hall Todd and Littlemore was formed to complete the building. NSW Public Works managed the project's three construction stages. It was commenced in 1959 and opened in October 1973 and since then NSW Public Works has provided consulting services to the Sydney Opera House Trust.



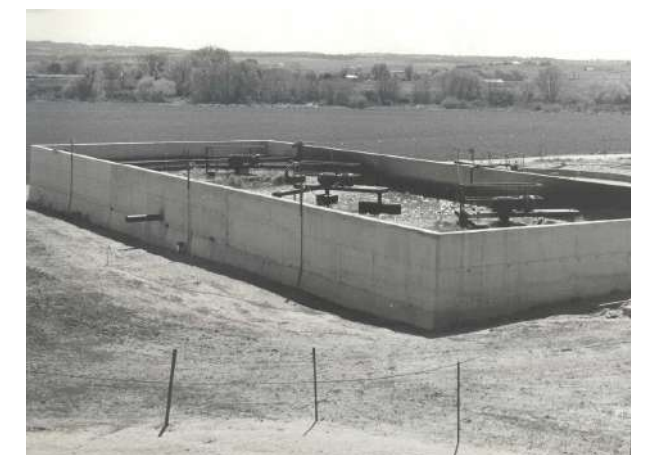
Water supply dams

NSW Public Works built over 100 major and minor water supply dams throughout NSW. Cataract, Avon, Cordeaux and Nepean Dams, built in the early 1900s, are still a major part of Sydney's water supply today. Dams such as Hume Weir, Burrinjuck, Oberon, Chichester and Adaminaby Dam continue to play a significant role in providing secure water supplies to Regional NSW.



Wastewater treatment

NSW Public Works' contribution to the development of low cost sewage treatment technology for local communities ranks as one of the most sustained of any public authority in the world. The construction of reticulated water supply and sewage systems in Sydney and major country towns between 1880 and 1930 produced dramatic improvements in public health. The development of the IDEA process in the 1970s and 1980s at Bathurst Sewage Treatment Plant (now a National Engineering Landmark) has led to the widespread application of this technology throughout NSW.



Service lines

NSW Public Works is uniquely equipped to provide a broad range of engineering and project assurance services across NSW, assisting clients to plan, deliver, operate and maintain their infrastructure.

- Project and program management
- Strategic procurement and assurance
- Asset and facilities management
- Engineering emergency management
- Natural disaster relief
- Transport infrastructure
- Environment and planning
- Heritage asset advisory
- Plan services
- Surveying and spatial
- Capital projects
- Buildings and major developments
- Water
- Wastewater
- Water planning
- Stormwater and flood risk
- River structures
- Dams
- Technical support
- Waste facilities and resource management
- Coastal infrastructure
- Electrical services
- Digital engineering
- Land acquisition and property services
- Whole of Government contracts



Project and program management

Bridging the gap between government and the private sector, helping clients maximise value, optimise costs, manage risks and realise their broader strategic objectives.

NSW Public Works’ project management capabilities, experience and systems provide our clients with project delivery assurance for projects of all sizes, types and complexities. NSW Public Works oversees approximately 1,900 projects per annum and contributed to the delivery of \$4.6bn billion of infrastructure in 2023-24.

NSW Public Works manages small scale local installations to multi-million dollar portfolio programs across NSW. Our state-wide network of engineers, project managers and technical specialists are uniquely experienced in delivering quality outcomes for regional communities.

Recent state-wide programs include:

- Delivering sustainable thermal comfort and air quality improvements to over 900 schools across NSW over 5 years, on behalf of the Schools Infrastructure Program.
- Enhancing liveability for key government workers in Far Western NSW by installing air conditioning and solar panels onto 280 teacher and police houses for the Teacher Housing Authority and Police Housing.
- Providing advisory and project management services for upgrades to Department of Primary Industries research facilities across the state.
- Managing the major maintenance and upgrade works program for Property NSW’s state-wide property portfolio.
- Managing the security component of the Government’s COVID-19 hotel quarantine program, including sourcing and deploying more than 2,700 authorised guards throughout the program.
- Leading urgent government natural disaster clean-up programs, including approximately 4000 damaged and destroyed properties across NSW in the aftermath of the 2019/20 bushfires, and more than 15,000 tonnes of waste from the March 2021 floods.



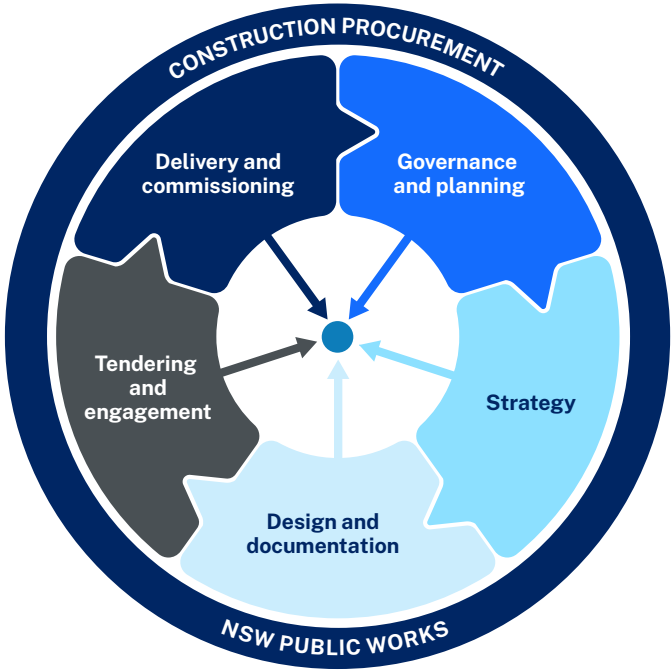
Strategic procurement and assurance

Tailored procurement strategies utilising NSW Public Works’ integrated Government Accredited Construction Procurement systems provide functional and expeditious delivery of each project or program.

NSW Public Works provide a strategic, value-add approach to construction procurement that is flexible and integrated across the entire project lifecycle. We partner with our clients to develop outcome-focused procurement strategies and place a strong emphasis on collaborative contracting and cooperative principles.

We understand the risk allocation imperatives of industry may differ to those of government, and we manage these risks through the tendering and contract management processes to achieve value for money and key non-price outcomes.

The planning and delivery phases of construction and capital works procurement are undertaken in accordance with the NSW Government Agency Accreditation Scheme for Construction.



- Specialists in government construction procurement
- Outcomes focused strategic procurement enabling the best infrastructure solutions
- Risk based tailored application to suit all your project needs
- Government accredited systems with built in probity and transparency
- Integrated and iterative value-add approach across project lifecycle

Asset and facilities management

Asset management

Utilising practical knowledge of the needs of agencies to deliver key services, NSW Public Works have extensive experience in developing asset management strategies and plans for a range of clients across NSW.

We work with our clients to develop asset management frameworks and systems that clearly define, monitor and report on the service level and performance requirements of their assets. We are in a unique position to assess government's infrastructure and built assets and provide specialist advice on the strategic planning, design, construction and maintenance of assets.

We understand a variety of operating asset types and have all the necessary in-house skills, including condition assessments, to optimise the lifecycle of a full suite of local government and agency owned assets including buildings, roads, water and wastewater utilities and parks and recreation facilities.

Helen Carroll

0402 969 141

helen.carroll@pwa.nsw.gov.au



Government facilities management contracts

The NSW Government has established facilities management contracts to provide asset maintenance, cleaning and security services across the state.

These services can be utilised separately or bundled together to provide maximum efficiency in delivery of these services at your site.

You will benefit from competitive rates, quality experienced service providers and agreed performance standards and online management systems that enable you to monitor, record, analyse and report on all aspects of maintenance and cleaning activities.

Maintenance contract

- Preventative, statutory, routine and reactive maintenance
- Programmed works

WholeofGovernmentMaintenance@pwa.nsw.gov.au

Cleaning contract

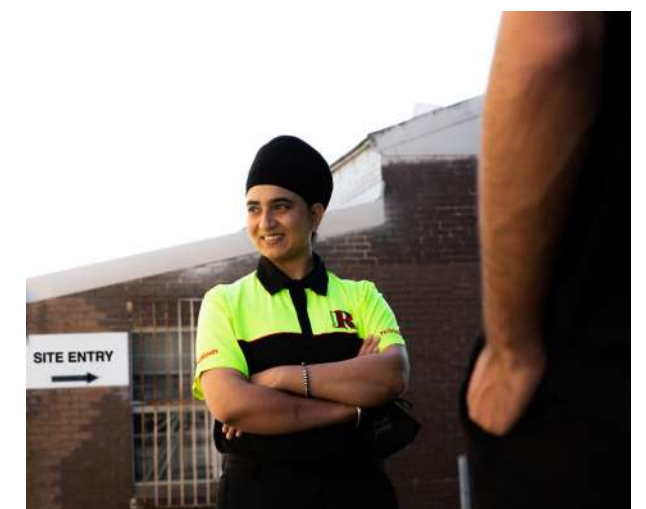
- General, regular and programmed cleaning, five days per week (excluding public holidays)
- Regular quality assurance inspections and on-site record management

WholeofGovernmentCleaning@pwa.nsw.gov.au

Security contract

- General security guards and mobile patrol
- Alarm monitoring and response

WholeofGovernmentSecurity@pwa.nsw.gov.au





Engineering emergency management

Under the State Emergency and Rescue Management Act 1989 and the State Disaster Plan, NSW Public Works coordinate the Engineering Services Functional Area.

We provide engineering coordination, assistance and technical advice on a state and district basis to emergency combat agencies, including Police, Fire and Rescue, SES, and any other functional area involved in the response phase of emergencies.

NSW Public Works' state-wide network of regional area coordinators are supported by approximately 100 'on-call' NSW Public Works technical specialists across the full range of engineering domains.



Martin Dwyer

0417 565 223

martin.dwyer@pwa.nsw.gov.au

Natural disaster relief

Our team administers financial assistance on behalf of NSW Treasury through the Natural Disaster Relief Arrangements Program for restoration works undertaken by councils.

Restoration works involving roads and road bridges are administered by the Roads and Maritime Services, and restoration of assets on crown lands and reserves are administered by the NSW Department of Industry, Crown Land Division.



Martin Dwyer

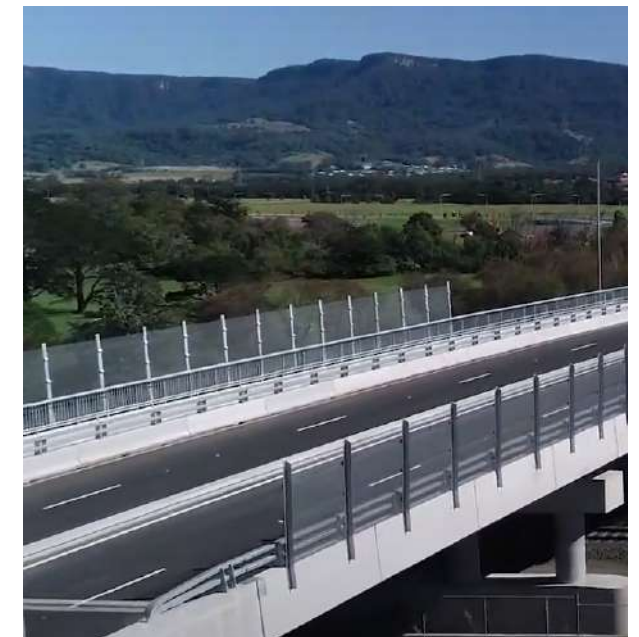
0417 565 223

martin.dwyer@pwa.nsw.gov.au

Transport infrastructure

Our long history of project management and delivery of transport infrastructure, including modern roads and bridges allows us to assist our clients with specialist procurement and management services for projects outside of standard operations. This includes bridge replacements, emergency rehabilitation, specialised geotechnical stabilisation works, creek bank stability improvements, drainage improvements, design management and construction management of major capital roadworks projects.

Our state-wide presence, with experienced infrastructure project managers, can be drawn upon as required to address short or longer term resourcing requirements.



John Anderson

0412 393 480

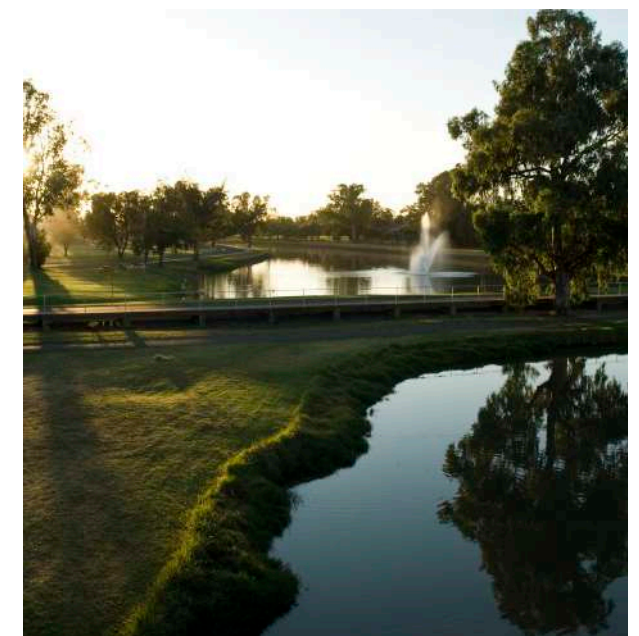
john.anderson@pwa.nsw.gov.au

Environment and planning

Comprehensive and accurate environmental and planning advice is critical to the successful delivery of any infrastructure project no matter the size or scale.

Our Environment and Planning team provides environmental planning, assessment and sustainability services and advice for all types of government.

We work collaboratively with clients and stakeholders to facilitate efficient planning and approval processes with a particular focus on infrastructure and water related projects for government clients.



Trish Ball

0455 058 773

trish.ball@pwa.nsw.gov.au



Heritage asset advisory

NSW Public Works provide expert advice, training and support to government to develop and promote best practice heritage conservation for public heritage assets.

We advise on the care, repair, management, disposal of and compliance requirements for heritage buildings, sites and collections.

We also manage the Minister's Stonework Program and the pre-qualification and procurement of private sector heritage resources for government.



Trish Ball

0455 058 773

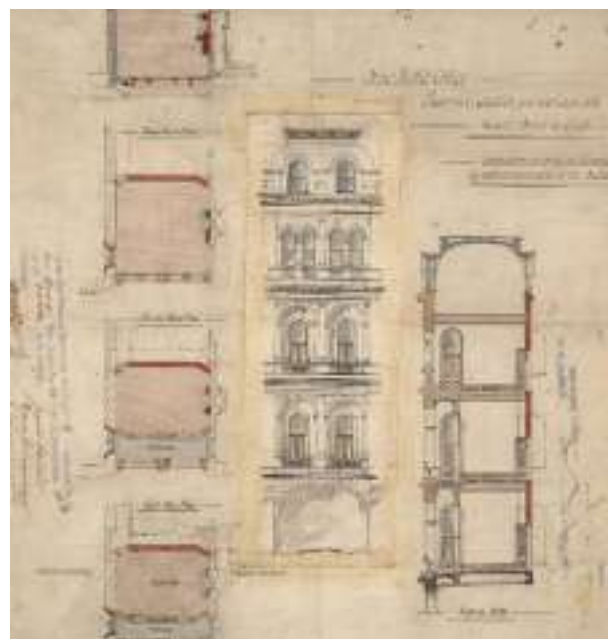
trish.ball@pwa.nsw.gov.au

Plan services

NSW Public Works' Plan Services function provides the retrieval of digitised PDF files of more than 700,000 drawings of public buildings and other infrastructure constructed by or through the former NSW Public Works over the last 200 years.

Approximately 75% are architectural and engineering services drawings and 25% are drawings of the State's major infrastructure (e.g. dams, sewerage schemes, bridges) and environment (e.g. rivers, harbours, reservoirs).

These resources are available to anyone managing relevant government asset upgrades, compliance and maintenance works.



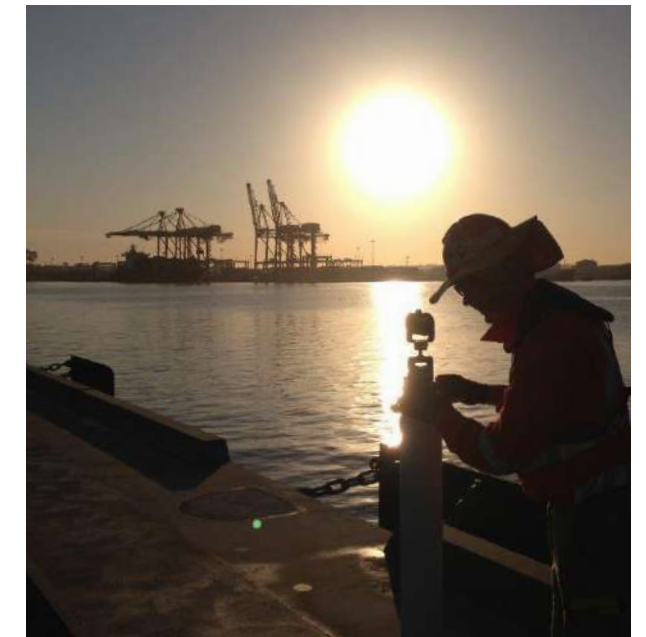
planservices@pwa.nsw.gov.au

Surveying and spatial

NSW Public Works provide a comprehensive range of surveying, property and spatial information products and services tailored to NSW government infrastructure projects.

We prepare survey briefs, quotations, monitor scope compliance and undertake data quality assurance checks.

Our service offering of cadastral surveying, topographic surveying and pipeline route surveys, is supplemented with specialist surveying and spatial expertise in precision monitoring surveying, terrestrial laser scanning, bathymetric riverbed surveys and high-end control surveys utilising GNSS.



John Anderson

0412 393 480

john.anderson@pwa.nsw.gov.au

Capital projects

Our state-wide team of expert project managers provides assurance, development and delivery solutions for government agency assets.

NSW Public Works provides project services from asset management advice through to project initiation, procurement, construction and handover.

We have established processes and governance arrangements in place to advise on the management of minor and major capital works projects and infrastructure assets.



Peter Hogan

0438 283 826

peter.hogan@pwa.nsw.gov.au



Developments

NSW Public Works provides assurance, advisory and procurement services for major regional place making developments. We work closely with our clients to understand their business requirements, focusing our service response to ensure the delivery of optimal project outcomes.

We manage strategic development negotiations and provide project advisory and assurance services across all development phases from inception to completion.



Stuart Landrigan

0428 211 200

stuart.landrigan@pwa.nsw.gov.au

Building

We have extensive experience and expertise in the delivery of building assets, such as gaols, courthouses, educational facilities, sporting facilities, health facilities, commercial office accommodation and community buildings.

Clients can take advantage of our network of local offices across the state enabling them to source expert project management personnel familiar with the local construction industry and conditions.

Our proximity reduces servicing costs, facilitates improved stakeholder communications and enables us to respond quickly to client needs.



Mark Cafe

0412 044 755

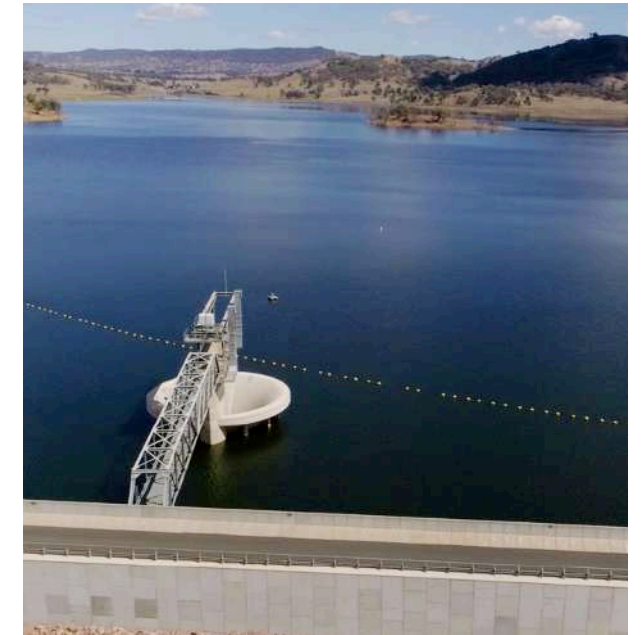
mark.cafe@pwa.nsw.gov.au

Water

We provide expertise in the provision of safe, clean and affordable drinking water to NSW regional communities.

With the experience of advising on over 400 country town and regional water supply schemes and more than 100 water treatment plants, we are a leading provider of sustainable water supply solutions.

We continuously investigate and train in new technologies to ensure the procurement of innovative options on behalf of our clients.



Glenn Fernandes

0421 487 408

glenn.fernandes@pwa.nsw.gov.au

Wastewater

We are at the forefront of wastewater management in NSW.

We have a strong technical base sustained by experienced strategic planners, designers and project managers of wastewater collection, transportation, treatment and re-use systems.

From large-scale regional wastewater management and re-use schemes to smaller roadside rest areas, for over four decades we have made a significant contribution to the development of modern, low cost, sustainable wastewater management systems for communities in NSW.



Glenn Fernandes

0421 487 408

glenn.fernandes@pwa.nsw.gov.au



Water planning

NSW Public Works support NSW local water utilities to plan for the provision of appropriate, affordable, cost-effective and sustainable urban water services that meet community needs and protect public health and the environment.

Since pioneering the development of the Integrated Water Cycle Management strategy in 2003, we have remained at the forefront of providing strategic planning advice to local water utilities.

Additional capabilities include strategic business planning for water supply and sewerage, drinking water management plans and recycled water management systems.



Glenn Fernandes

0421 487 408

glenn.fernandes@pwa.nsw.gov.au

Stormwater and flood risk

Our expertise in effective floodplain management includes the investigation and evaluation of appropriate response strategies and risk reduction methodologies. We advance the use of either structural or non-structural floodplain risk management options, and we are at the forefront of levee design, audit and management. We utilise advanced technology tools, including GIS and industry standard water quality, terrain, hydrologic and hydraulic models. In the stormwater space, we collaborate with clients and their communities to develop sustainable strategies to deliver re-use opportunities or design innovative infrastructure to convey runoff, minimise flooding and maximise beneficial water quality outcomes.



Allan Gear

0436 652 648

allan.gear@pwa.nsw.gov.au

River structures

NSW Public Works specialises in innovative and sustainable outcomes that contribute to improving water security for communities, managing the effects of flooding, and delivering enhanced environmental and ecological benefit.

We assist clients in hydraulic investigations and detailed design and delivery of all types of river structures. We are sought out for our expertise in the delivery of weir upgrades and associated fishways, a field of practice which requires a unique understanding of river hydrodynamics and fish behaviour.

We are also industry specialists in the delivery of river bank stability works, levees, detention basins and constructed wetlands.



Allan Gear

0436 652 648

allan.gear@pwa.nsw.gov.au

Dams

Our clients have access to a widely experienced dam safety, management and engineering team who collaborate with Dams Safety NSW and contribute significantly to the preparation of Australian National Committee on Large Dams guidelines. We are experienced in managing large multidisciplinary project teams, supplementing our internal resources with specialist private sector capabilities where required. We are specialists in dambreak studies.

We provide dam owners with the specialist advice and services required to enable them to efficiently operate and maintain their dams to achieve the required levels of service, avoid costly liabilities and meet owners' obligations with confidence.



Allan Gear

0436 652 648

allan.gear@pwa.nsw.gov.au



Technical support

Our pool of technical and professional specialists provide technical support on projects across the business.

Many resources have decades of experience in their respective fields and offer a wealth of knowledge that can be leveraged to solve public infrastructure needs.

Specialists are available in the following fields: geotechnical, chemical, civil, mechanical, structural, electrical, SCADA and telemetry, programmable logic controllers and computer aided design.



Glenn Fernandes

0421 487 408

glenn.fernandes@pwa.nsw.gov.au

Waste facilities and resource management

We are uniquely equipped to provide both design management and construction quality assurance roles for waste related projects.

We offer services from contaminated site assessment, waste classification valuation and imported materials to project planning, design management and construction management.

We have experience in the decommissioning of existing landfills and the construction of new landfill cells and waste transfer facilities.



John Anderson

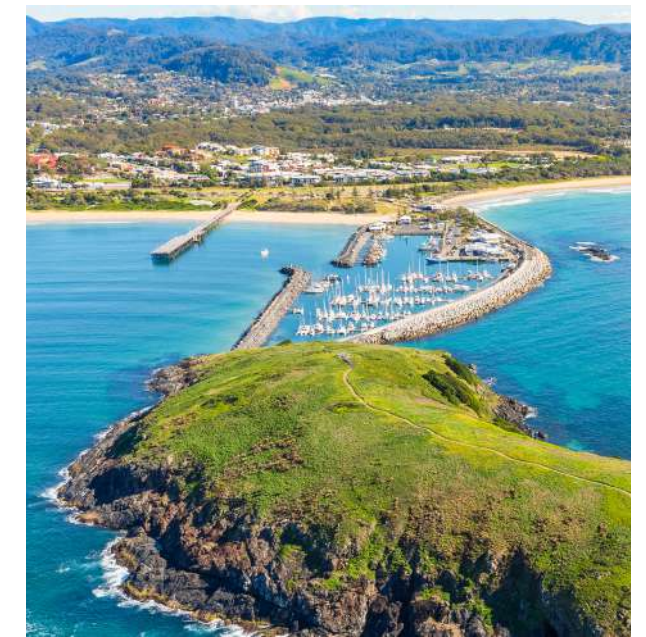
0412 393 480

john.anderson@pwa.nsw.gov.au

Coastal

NSW Public Works provide a broad range of engineering services across NSW, assisting clients to procure, manage, operate and maintain their maritime facilities.

We have a long history of assisting our clients with specialist procurement and project management services for projects outside of standard operations including breakwater constructions, maintenance dredging, condition assessments, installation of cathodic protection systems to concrete structures, wharf and jetty construction and maintenance, mooring pile repairs, heritage seawall restorations and boat launching ramp facilities.



Sarah Wylie

0427 200 604

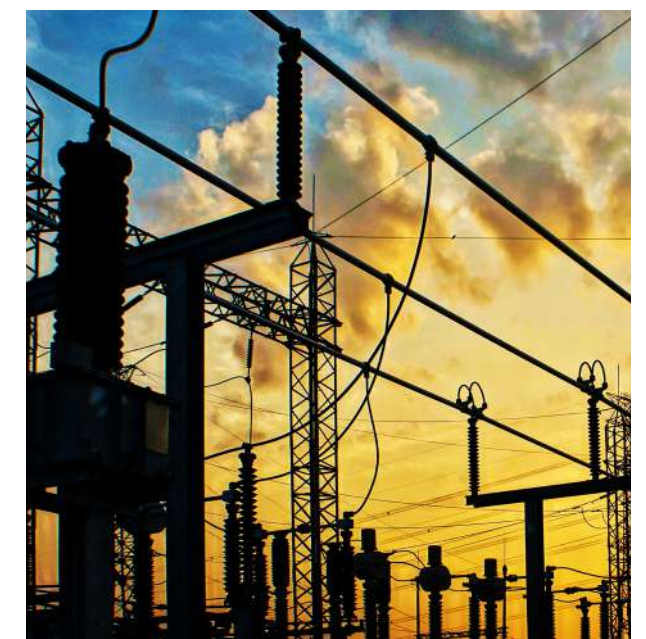
sarah.wylie@pwa.nsw.gov.au

Electrical services

NSW Public Works' specialist electrical services team provide a range of technical and advisory services to streamline the design, approval and implementation of the electrical aspects of infrastructure projects.

We are uniquely placed to facilitate engagement between design consultants and supply authorities, ensuring that, where network upgrades are required, design solutions are optimised and costs are reduced.

The experience gained on hundreds of sites requiring electrical network upgrades has allowed us to advise on setting up a design process which to date is estimated to have saved Schools Infrastructure NSW in the order of \$26M by reviewing and challenging power requirements for schools in NSW.



Brad Fisher

0400 919 022

brad.fisher@pwa.nsw.gov.au

Why choose NSW Public Works?



**Accredited
for planning
and delivery of
capital works**

NSW Public Works is accredited under the NSW Government Agency Accreditation Scheme for Construction to manage the planning and delivery phases of construction and capital works procurement. NSW State and Local Government entities can directly engage the services of NSW Public Works under the provision of NSW Government Procurement Board Direction PBD 2021-04 and Section 55 of the Local Government Act 1993, providing efficiencies and cost savings.



**Strong focus
on quality,
environmental
and safety
management**

NSW Public Works operates under triple certification for quality, occupational health and safety (WHS) and environmental (QSE) management systems. These systems and processes provide the foundation for delivering quality projects and a continuous improvement culture, that embraces QSE leadership at all levels and integrates QSE into all activities. NSW Public Works' Project Management Framework is the backbone of our quality system and is used to manage our projects and ensure we deliver to agreed requirements.



**State-wide
resources**

Regional clients benefit from our state-wide network of offices enabling them to source expert project management personnel familiar with the conditions and construction industry issues in their area. This proximity reduces servicing costs, facilitates improved stakeholder communications and enables us to respond quickly to your needs, providing a single point of contact for all services.



**Government
relationships
and knowledge**

Successful delivery of complex infrastructure projects relies on effective interaction with stakeholders and regulatory government agencies. NSW Public Works' unique position within NSW Government enables us to bridge the gap between our clients and Government stakeholders to ensure necessary consultations and approvals are undertaken efficiently and effectively.



Managed risks

We place considerable emphasis on advising clients of their risks on projects, including the options and costs to manage these risks. Wherever possible, risks are identified early and inform our planning and procurement strategy development processes. Risks are continuously monitored and updated as projects progress and discussed and managed with clients and contractors.

Working across NSW

HUNTER NEW ENGLAND REGION

Newcastle
117 Bull Street
Newcastle West NSW 2302

Tamworth
155-157 Marius Street
Tamworth NSW 2340

Armidale
85 Faulkner St
Armidale NSW 2350

Inverell
7023 Gwydir Highway
Inverell NSW 2360

NORTH COAST REGION

Lismore
120 Dally Street
Lismore NSW 2480

Coffs Harbour
359 Harbour Drive
Coffs Harbour NSW 2450

Port Macquarie
Level 2, 41-47 Horton Street
Port Macquarie NSW 2444

SYDNEY METRO REGION

Parramatta
4 Parramatta Square
12 Darcy Street
Parramatta NSW 2150

The Rocks
66 Harington Street
Sydney NSW 2000

SOUTH COAST REGION

Wollongong
Level 3, Block E
84 Crown Street
Wollongong NSW 2500

Goulburn
Suite 5, 167 Auburn Street
Goulburn NSW 2580

Moruya
66 Campbell Street
Moruya NSW 2537

Queanbeyan
Ground Floor East
11 Farrer Place
Queanbeyan 2620

Nowra
5 O'Keefe Avenue
Nowra NSW 2541

RIVERINA/WESTERN REGION

Bathurst
Level 1, 346 Panorama Avenue
Bathurst NSW 2795

Dubbo
34 White Street
Dubbo NSW 2830

Broken Hill
Level 1, 32 Sulphide Street
Broken Hill NSW 2880

Griffith
104-110 Banna Avenue
Griffith NSW 2680

Wagga Wagga
2-6 Coleman Street
Wagga Wagga NSW 2650

Dareton
1998 Silver City Highway
Dareton NSW 2717



T 1300 00 88 88
E publicworks@pwa.nsw.gov.au
W publicworks.nsw.gov.au