



MINISTER'S STONEMWORK PROGRAM

2016/2017

PROGRAM ACHIEVEMENTS





PROGRAM SUMMARY

MOVING BEYOND 'BUSINESS AS USUAL'

We've completed our first year under Public Works Advisory, formerly NSW Public Works, building on the best of our past and achieving some great successes. The energy and passion of our specialised staff, collaboration with private sector heritage expertise and strength of our partnerships with State Government agencies has been a key factor in this year's achievements.

The Minister's Stonework Program is now administered by Heritage Asset Advisory in NSW Public Works Advisory, and utilises Heritage Stoneworks as our key delivery partner, we are both now located in the Department of Finance, Services, and Innovation. The Program was established in 1991 to provide a state-wide strategic approach to the back-log maintenance requirements of State owned heritage stone buildings, monuments, and structures.

The budget for this year totalled \$12,036,900, which was comprised of a \$6,551,000 Treasury allocation, \$3,846,375 in agency contributions and a one off \$1,639,525 Secretary contribution.

Thirteen diverse conservation projects were carried out in 2016/17 including public monuments, schools, hospitals and courthouses. By working in partnership with State agencies the value and benefits of the Program are significantly increased with improved co-ordination of planned works, scaffold utilisation and cost efficiencies. Agency contributions enabled repairs to roofs, timber joinery, painting and seismic stabilisation of chimneys in addition to stonework repairs.

Public safety was again our focus this year with cyclic inspections carried out under the MSP Safety Audit Program. The inspections also provide key information for repair documentation. During 2016/17 forward documentation was carried out towards the rolling program of schools which included Bowral PS, Brewongle Field Studies Centre, Gardener's Rd PS, Greens Square School and Glebe PS.

Our commitment to education and training continued with Regional Heritage Awareness Workshops presented by the MSP team in Wagga Wagga, Armidale, Bathurst, Dubbo. We were delighted to receive a National Trust award this year for conservation of the Choragic Monument, Royal Botanic Gardens. This report summarises our achievements this year and we look forward to building on these in the years to come.

Stuart Pickering
Executive Director
Public Works Advisory

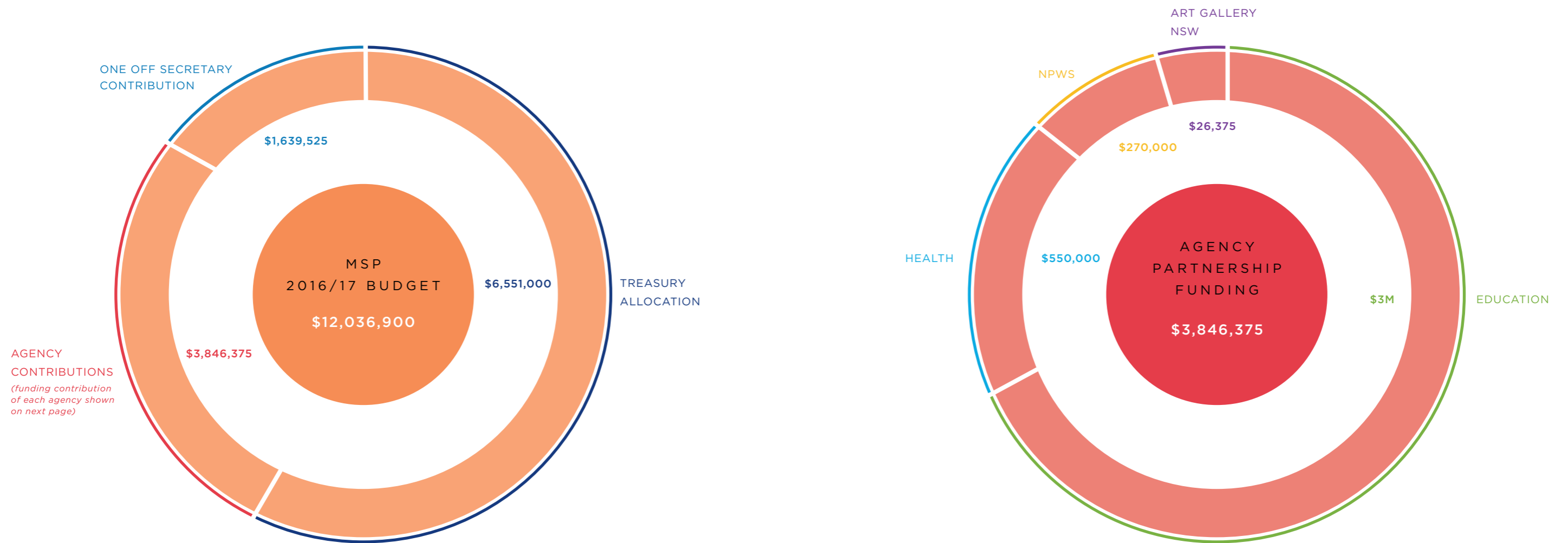
AGENCY PARTNERSHIPS

The Minister's Stonework Program works in funding partnership with State Government agencies to undertake associated external repairs to maximise site establishment, scaffold access and heritage trades expertise.

These works include roofing, timber joinery repairs, repainting and chimney seismic stabilisation. In 2016/17 co-contributions totalled \$ 3,846,375 towards the Minister's Stonework Program. This collaboration provides cost, time & quality efficiencies to government.



Crown St Public School



AWARDS



In the Year 2017 the NSW Minister's Stonework Program won an award in the category of Built Conservation at the 23rd Annual National Trust Awards. The project was the Choragic Monument of Lysicrates, Royal Botanic Gardens, Sydney .

The frieze tells the story of the Greek God Dionysus fighting off pirates who turn into dolphins when thrown into the water. Constructed from 3 stone units, the multidisciplinary conservation team chose to re-carve one of the frieze stones due to its advanced state of decay and loss of carved surface. The project also included research, preparation of measured drawings, condition assessment, desalination and stone patching.

Few public monuments in NSW reach out to such a diversity of community interest. These conservation works have been a catalyst for many great and lasting community events and creative pursuits, including Greek, legal, and theatre communities due to the various themes and associations of the monument.

WINNER BUILT CONSERVATION

Choragic Monument of Lysicrates, Royal Botanic Gardens, Sydney



PROJECTS SHEETS

MSP 2016/17 Project list.

* Key projects are featured in the following project sheets

*Art Gallery of NSW – Bronze Sculptures

*Bathurst Courthouse Stairs

*Choragic Monument of Lysicrates

*Concord Public School Final Stage

*Crown St PS Final Stage

*Gladesville Hospital B38,

Gladesville Hospital Punt Rd Stage 1

Hartley Historic Village

*Jerrys Plains Public School,

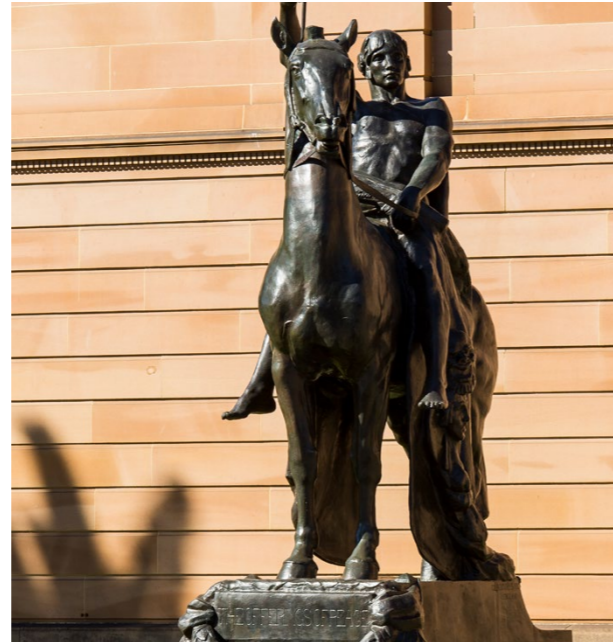
Royal Prince Alfred Hospital – Victoria Pavilion

*Safety Audits, Art Gallery NSW, Syd Hosp,

*State Library of NSW stage 7 & 8

Sydney Hospital Area 9 Stage 1

Woollahra Public School Stage 1



ART GALLERY OF NSW - BRONZE SCULPTURES

AGENCY Art Gallery of NSW

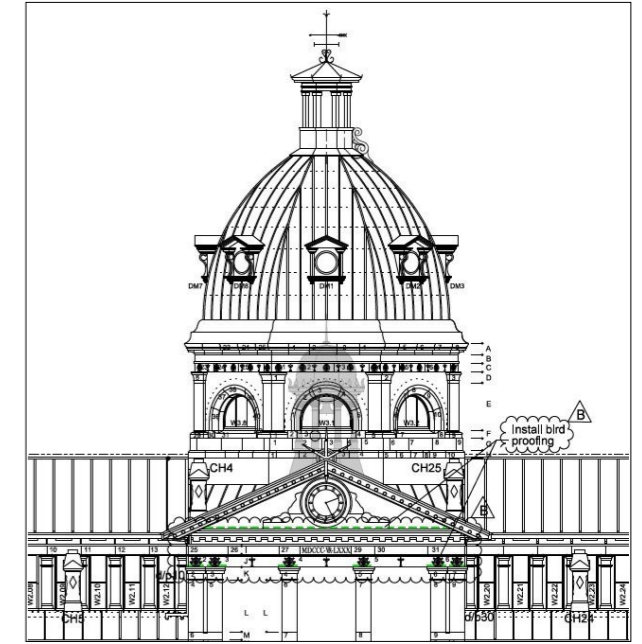
LOCATION Art Gallery Rd, Sydney

2016/17 EXPENDITURE \$179,803 (MSP \$79,803, \$100,000 Secretary's contribution)

The Offerings of War and *The Offerings of Peace* bronze sculptures were created by English sculptor Gilbert Bayes. They were commissioned by the Trustees of the National Art Gallery of NSW in 1916. Due to metal shortages during the Great War, there was a considerable delay in their completion.

The sculptures were cast in London in 1923. They were briefly displayed outside the Royal Academy of Arts in London, before being shipped in wooden crates to Australia and installed outside the Art Gallery NSW in 1926.

The 2016/2017 conservation works included bronze cleaning and removal of the deteriorated wax coating (dating from 1993), repointing of the stone plinths, localised bronze repair, corrosion treatment and recoating with a protective wax.



BATHURST COURTHOUSE

AGENCY Department of Justice

LOCATION Russell St, Bathurst

2016/17 EXPENDITURE \$576,926 (MSP \$276,926, \$300,000 Secretary's contribution)

Bathurst Courthouse was designed by Colonial Architect James Barnet and constructed in two stages. The Post and Telegraph Office wings were completed in 1877 and the central building in 1880. The courthouse is a rare example of a Victorian era court complex and is listed as an item of state significance on the State Heritage Register.

In June 2014 the Minister's Stonework Program prepared a Maintenance Strategy Report to assess the condition of all heritage significant stone courthouses state-wide. The report provided a centralised forward planning document with prioritisation crite-

ria based on public safety risk, condition and significance. Bathurst Courthouse was identified as a Priority 1 project.

In 2016/17 repairs included major upgrades requiring Heritage Council approval and archaeological monitoring. The concrete main entry stairs were reinstated in sandstone. The deteriorated east verandah roof was also replaced.



CHORAGIC MONUMENT OF LYSICRATES

AGENCY Royal Botanic Gardens and The Lysicrates Foundation

LOCATION Mrs Macquarie's Rd, Sydney

2016/17 EXPENDITURE \$327,773 [MSP \$127,773 , \$200,000 Secretary's contribution]

The Choragic Monument is located in the Royal Botanic Gardens, Sydney near Farm Cove and is a replica of the original, erected in 334 BC in Athens, Greece. It was carved in 1870 by Walter McGill, having been commissioned by Sir James Martin for his garden at his residence in Potts Point. The monument was relocated to the Royal Botanic Gardens in 1943.

The conservation works included the careful cleaning of the Monument using gentle non-invasive methods, along with repointing of mortar and patching of fine cracks. One of the three bas-relief frieze stones had lost

all recognisable detail and was re-carved and replaced.

The completed works were marked with an unveiling by the Minister for Finance, Services and Property, Dominic Perrottet in a ceremony on October 16th 2017.



CONCORD PUBLIC SCHOOL - FINAL STAGE

AGENCY Department of Education

LOCATION Burwood Rd, Concord

2016/17 EXPENDITURE \$1,658,887 (MSP \$658,887 , \$1,00,000 DEC)

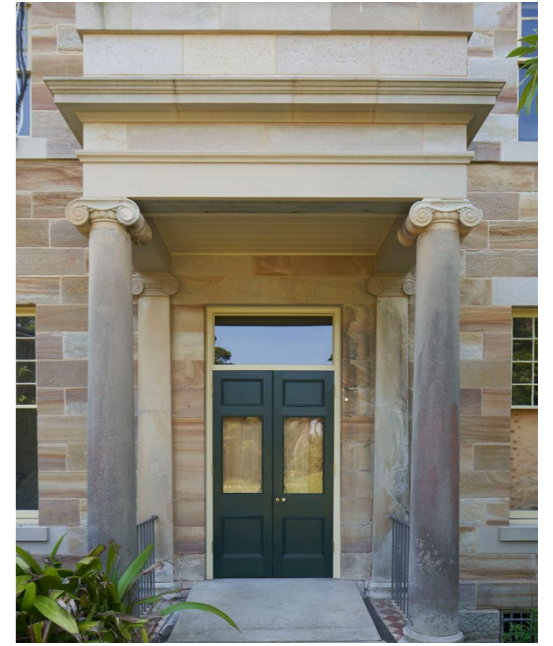
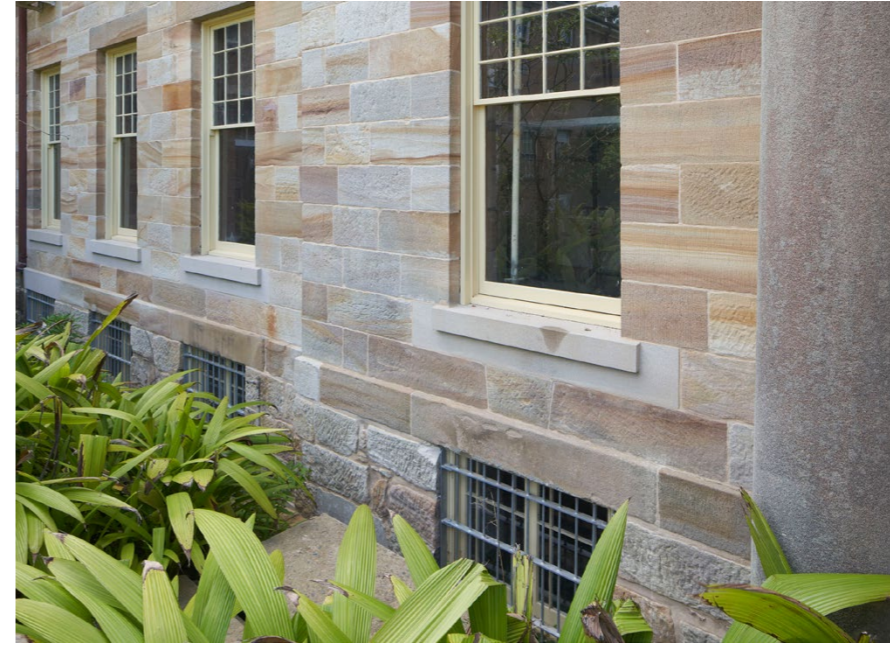
The school building at Concord Public School was designed by Government Architect William Kemp, and constructed in 1893. The building was extended in 1910 and again in 1924, integrating well with the main building.

Designed with strong Queen Anne influences, special features include multi-coloured bricks, use of decorative gable terracotta tiles, rusticated and decorated stonework, chimneys, stone finials, brick columns above stone cornices, and steep pitched slate roof with parapet gables.

The scope of works over the two-year program of works included structural stabili-

sation of gables and chimneys, stone replacement of deteriorated gables, cornice string course and windowsill stones. Overhanging stone courses were protected with new lead weatherings.

Brickwork and stonework were repointed using materials, mixes and methods appropriate for heritage buildings. The cracked and deteriorated slate roof tiles were replaced with new Penrhyn Welsh slate tiles. Cracked terracotta tiles were reproduced and replaced. The multiple timber framed windows were repaired, repainted and fitted with new security grills.



CROWN STREET PUBLIC SCHOOL - FINAL STAGE

AGENCY Department of Education

LOCATION 356 Crown St, Surry Hills

2016/17 EXPENDITURE \$1,353,129 (MSP \$353,129, \$1,00,000 DEC)

Designed by the NSW Government Architect G.A.Mansfield, the original building (Block A) was constructed in 1879 in the Gothic Revival Style. The walls are face brick on sandstone foundations featuring sandstone window hood moulds and sills, cornices, crenelated parapets and string courses. The plan is asymmetrical with a centrally placed three storey tower with a fine metal roof spire.

Block A facade and palisade fence conservation works commenced at Crown Street Public School in 2015 and completed in 2016/17. Works included roof and stone re-

placement, seismic stabilisation, repointing, stone patching, tuckpointing, repointing, and repairs to metalwork, timber and rainwater goods.

GLADESVILLE HOSPITAL - BUILDING 38

AGENCY Ministry of Health

LOCATION Victoria Rd, Gladesville

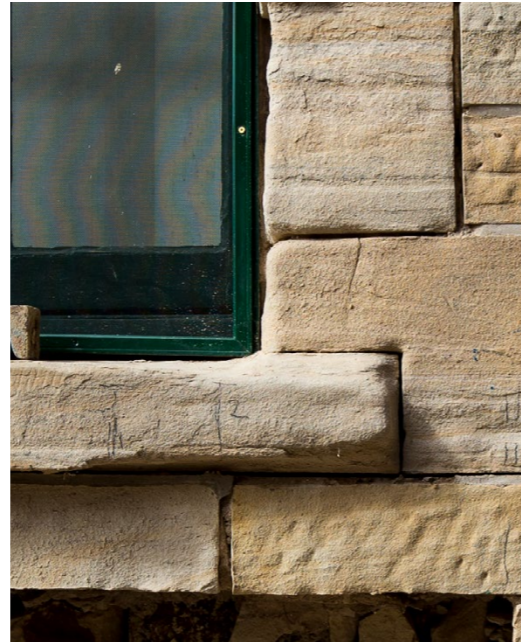
2016/17 EXPENDITURE \$676,337 (MSP \$376,337, \$300,000 Health)

Building 38 at Gladesville Hospital is a state significant building designed by Colonial Architect Mortimer Lewis. Constructed in 1839, the south stone portico is believed to be the first use of the ionic capital in the colony.

By 2015 Building 38 was unoccupied due to its poor condition. The complex double hipped roof with internal gutters and down pipes and large central copper box gutter was failing and causing water ingress and damage. Detailed condition assessments of the building were prepared by the MSP team and

provided a program of prioritised scope of repairs to recover the building to a condition appropriate for adaptive re-use.

A 4 year program of works has been established to address catch-up maintenance works commenced in 2015/16 with installing a new slate roof and box gutter and chimney repairs. This year works commenced on the south elevation with timber window repairs, installation of new security grills and a major reconstruction of the stone portico



JERRYS PLAINS PUBLIC SCHOOL

AGENCY Department of Education

LOCATION Doyle St, Jerrys Plains

2016/17 EXPENDITURE \$948,380 (MSP \$448,380, \$500,000 DEC)

Jerrys Plains Public School was established in 1881 in the same year as the Police Station and Church. The school buildings are a typical example of the Gothic style schools designed by architect G.A. Mansfield, with a steeply pitched roof and finial-topped gables. Both the Principal's residence and adjacent school building were constructed from locally quarried sandstone and feature full coursed quoins (corner stones) and window reveals, with split course random ashlar walls.

Jerrys Plains Public School is an exceptional example of the style of school architecture that was common during the period and is an excellent example of the work of Govern-

ment Architect G.A. Mansfield. It also provides historical evidence of the early development of the town of Jerrys Plains as a rural settlement.

Repairs completed in 2016/17 include the seismic stabilisation of the roof and chimneys to both buildings, replacement of deteriorated sandstone, mortar repointing, maintenance of rainwater goods, installation of a damp proof course, drainage upgrades and repainting of external timber joinery. These works have enhanced the stability, condition, appearance and longevity of the buildings of Jerry Plains Public School, ensuring its conservation into the future.

SAFETY AUDITS AND URGENT DOCUMENTATION

AGENCY Multiple NSW State Government Agencies

LOCATION Various

2016/17 EXPENDITURE \$ 251,954

The Safety Audit Program continued this year with urgent and planned inspections carried out across multiple agencies. The multidisciplinary assessment teams included heritage architects, structural engineers and stonemasons.

During the audit the immediate public safety risk of falling stone is addressed by removal or stabilisation of stone elements. Repairs are scoped and documented, cost estimates are then prepared to inform the MSP forward program.

The audits and documentation undertaken in 2016/17 include: National Art School,

Erskinville Public School, Tempe Public School, Croydon Public School and Sydney Hospital.



STATE LIBRARY OF NSW - FINAL STAGE

AGENCY State Library of NSW

LOCATION Macquarie St, Sydney

2016/17 EXPENDITURE \$1,178,970 [MSP \$1,178,970]

The State Library NSW is the only remaining public library building constructed in Sydney dating from the early twentieth century. Built in four distinct stages between 1910 and 1964, the building reflects the changing attitudes to library planning theory.

Constructed of Maroubra sandstone with a trachyte plinth, the facades were affected by exposure to salt laden air and rain. This caused the high-level stone cornices and copings to deteriorate requiring extensive maintenance and repair.

A staged program of facade conservation works commenced in 2002 in funding partnership with the State Library NSW and were completed in 2016/17. This year works on the final stages (Stage 7 and 8) included stone replacement, stone patching and repointing, desalination, installation of protective lead weatherings, bird proofing and metal windows repairs.





MSP TEAM

The MSP team is comprised of Heritage Asset Advisory and Heritage Stoneworks supported by highly skilled specialist consultants and heritage trades contractors.



MINISTER'S STONEWORK PROGRAM, NSW GOVERNMENT

66 HARRINGTON STREET, THE ROCKS NSW 2000 | WWW.PUBLICWORKSADVISORY.NSW.GOV.AU